

Bird Brand ecosote® new generation wood preserver

Introduction

Bird Brand Ecosote® effectively preserves external timber to prevent against wet rot and decay. Ecosote is registered with the UK HSE as a wood preservative and surface biocide. The active ingredient is now Di-Decyldimethyl Ammonium Chloride 0.598% W/W. It controls green algae growth on contact. Although it is water based, it penetrates timber just like a solvent based wood preservative.



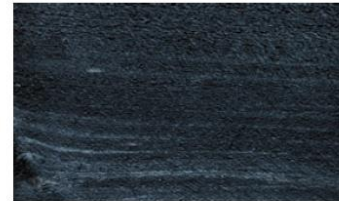
Light

Size	4 Litre	20 Litre
Stock Code	0084	0086
Box Q	4	1
Layer Q	44	16
Pallet Q	176	32
Barcode	5016679 865685	5016679 865647



Dark

Size	4 Litre	20 Litre
Stock Code	0080	0082
Box Q	4	1
Layer Q	44	16
Pallet Q	176	32
Barcode	5016679 865425	5016679 865432



Black

Size	4 Litre	20 Litre
Stock Code	0088	0090
Box Q	4	1
Layer Q	44	16
Pallet Q	176	32
Barcode	5016679 865739	5016679 865760



KEY BENEFITS

- Low Hazard Classification.
- Low VOC- Water based system.
- High level of penetration on dry timber (contains glycols).
- Higher fade resistance than gas oil based treatments/creosote.
- Pleasant low pine odour.
- Non-flammable and has a lower environmental impact than Creocote.
- Non hazardous for transport.
- Easy to apply by brush, spray or dip. Coverage 3-5m² per litre.
- ½ M litres manufactured per year and sold in the UK since February 2009.
- Ready to use aqueous wood preservative and surface biocide based on Di-Decyldimethyl Ammonium Chloride 0.598% W/W.
- HSE Approved for use as a Wood Preservative & Surface Biocide under the UK Control of Pesticides Regulations COPR. HSE number 10432.



Ecosote Wood Preserver is a ready to use wood preservative and surface biocide for use on exterior timbers. It penetrates into the timber without the need for solvents and can be used on sheds, fences and timbers where a creosote like finish is required. Regular use of Ecosote Wood Preserver will help deter against fungi, mould, lichen and algae on exterior timbers.

**WOOD PRESERVATIVE
FOR AMATEUR USE
AGAINST FUNGI ON
EXTERNAL TIMBERS.
SURFACE BIOCIDES FOR
AMATEUR USE AGAINST
FUNGI, MOULD, LICHEN
AND ALGAE ON
EXTERNAL SURFACES.**

STATUTORY CONDITIONS OF APPROVAL RELATING TO USE.

FOR USE ONLY AS A WOOD PRESERVATIVE AND SURFACE BIOCIDES.

Application rate: APPLY 1 LITRE OF PRODUCT EVERY 4 SQUARE METRES

Users must comply in full with all their legal responsibilities under the Control of Pesticides Regulations 1986 (as amended), including complying with all Conditions of Approval.

READ ALL PRECAUTIONS BEFORE USE. HSE No. 10432

HEALTH & SAFETY

This product is approved under the Control of Pesticides Regulations 1986 - HSE No 10432 as a ready to use wood preservative. Contains DIDECYLDIMETHYL AMMONIUM CHLORIDE 0.598% W/W.

USE ONLY AS DESCRIBED ON LABEL.

Labelling according to Regulation (EC) No. 1272/2008 (CLP)
Keep out of reach of children

This material and its container must be disposed of in a safe way.

DO NOT CONTAMINATE FOODSTUFFS, EATING UTENSILS OR FOOD CONTACT SURFACES.

UNPROTECTED PERSONS AND ANIMALS SHOULD BE KEPT AWAY FROM TREATED AREAS FOR 48 HOURS AND UNTIL SURFACES ARE DRY.

WASH HANDS AND EXPOSED SKIN before meals and after use.

KEEP IN A SAFE PLACE

DO NOT TOUCH TREATED SURFACES UNTIL DRY

COVER ALL WATER STORAGE TANKS before application.

ALL BATS ARE PROTECTED UNDER THE WILDLIFE AND COUNTRYSIDE ACT 1981. BEFORE TREATING ANY STRUCTURE USED BY BATS, CONSULT NATURAL ENGLAND, SCOTTISH NATURAL HERITAGE OR THE COUNTRYSIDE COUNCIL FOR WALES.

To avoid risks to man and the environment, comply with the instructions for use.

DIRECTIONS FOR USE:

Shake well before use and ensure the wood is dry and clean without existing paints/varnish. For timbers covered with excess green algae, first use Bird Brand Fungicidal Wash giving time for its action. Do not apply Ecosote in temperatures below 5 Deg C.

Notes for Brush and Spray application:

Apply 2-3 even coats paying particular attention to the end grain. Follow the manufacturers guidelines avoiding mist and damage to surrounding property. Ecosote is fully dry within 24 hours. Clean brushes, sprayers and any splashes/spillage with soapy water.